



## UPHILL INTERIOR PLAN

 4 BEDROOM     3.5 BATHROOM     2,572 SQ. FT.

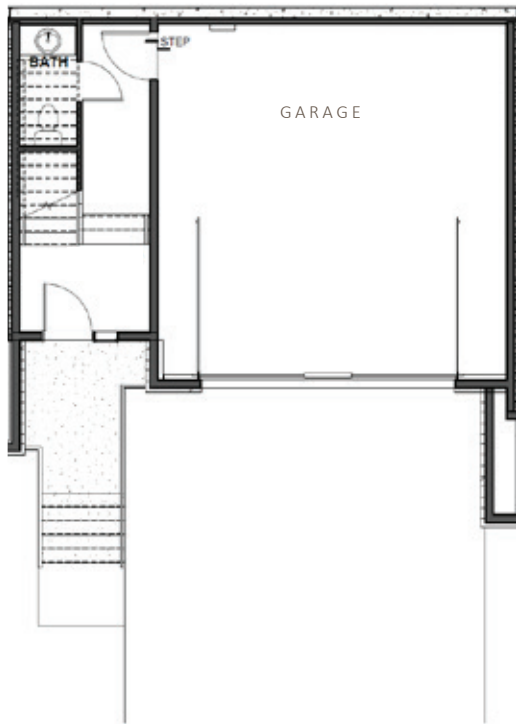
- The kitchen, living room, and dining are all open providing great flow & space to entertain.
- Living room sliding doors provide seamless indoor/outdoor living with a panoramic view.
- Private entry to main residence.
- Top level offers additional common space with unobstructed views of Jordanelle.
- Open, flowing living room, dining area and kitchen design.
- Spacious primary suite, walk-in closet, & deck.
- Expansive windows to introduce natural light.
- Take control of your comfort with our Dual Zone Air System, regulating two separate zones effortlessly.
- Wood floors in upstairs common area
- A wet bar for limitless entertainment options.

RESIDENCE 72

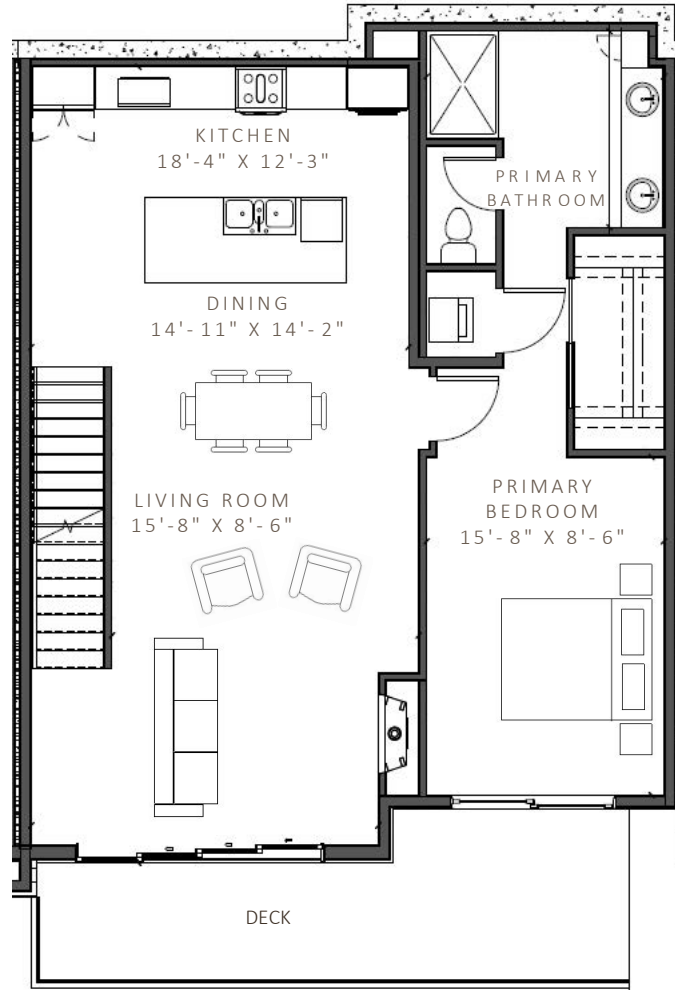
UPHILL INTERIOR



LEVEL 1



LEVEL 2



LEVEL 3

