

RESIDENCE 71

 KLAIM



UPHILL EXTERIOR PLAN

 3 BEDROOM  2.5 BATHROOM  2,554 SQ. FT.

- The kitchen, living room, and dining are all open providing great flow & space to entertain.
- Living room sliding doors provide seamless indoor/outdoor living with a panoramic view.
- Private entry to main residence.
- Top level offers additional common space with unobstructed views of Jordanelle.
- Open, flowing living room, dining area and kitchen design.
- Spacious primary suite, walk-in closet, & deck.
- Expansive windows to introduce natural light.

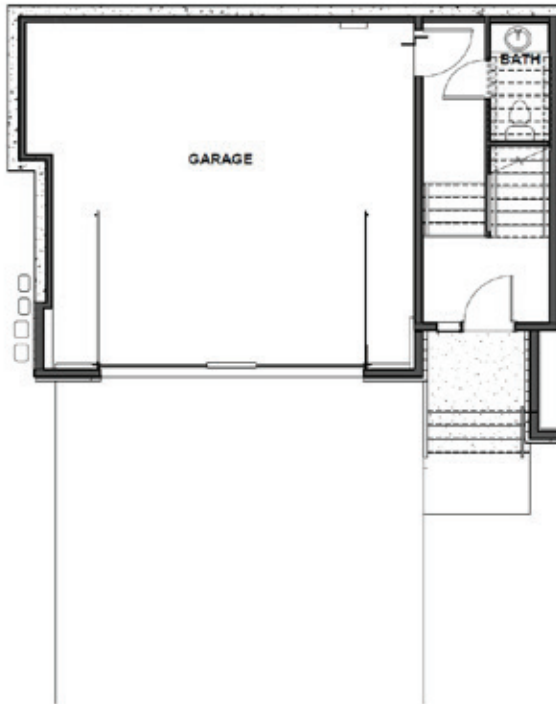
RESIDENCE 71



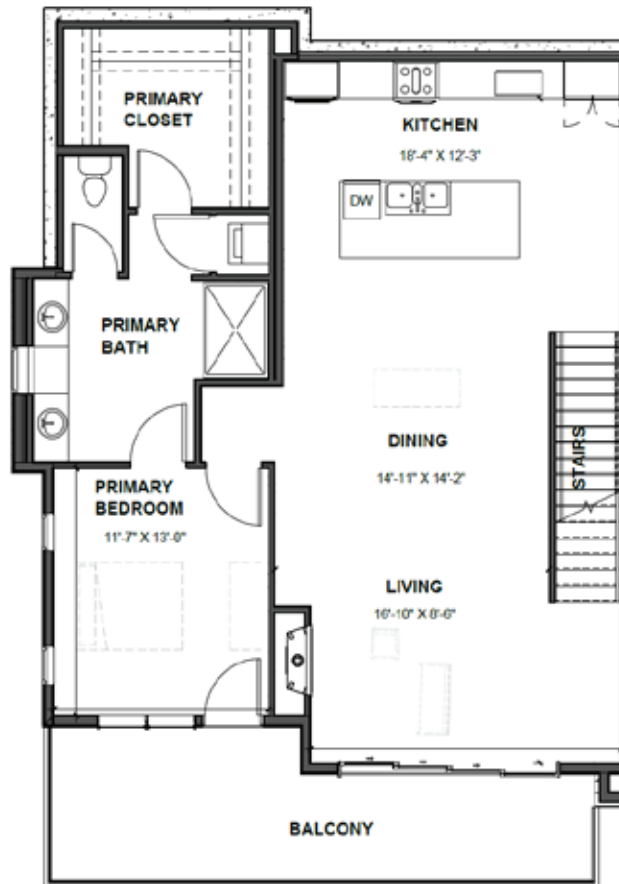
KLAIM

UPHILL
EXTERIOR

LEVEL 1



LEVEL 2



LEVEL 3

